

A unique data platform supporting research – the Compensation Research Database

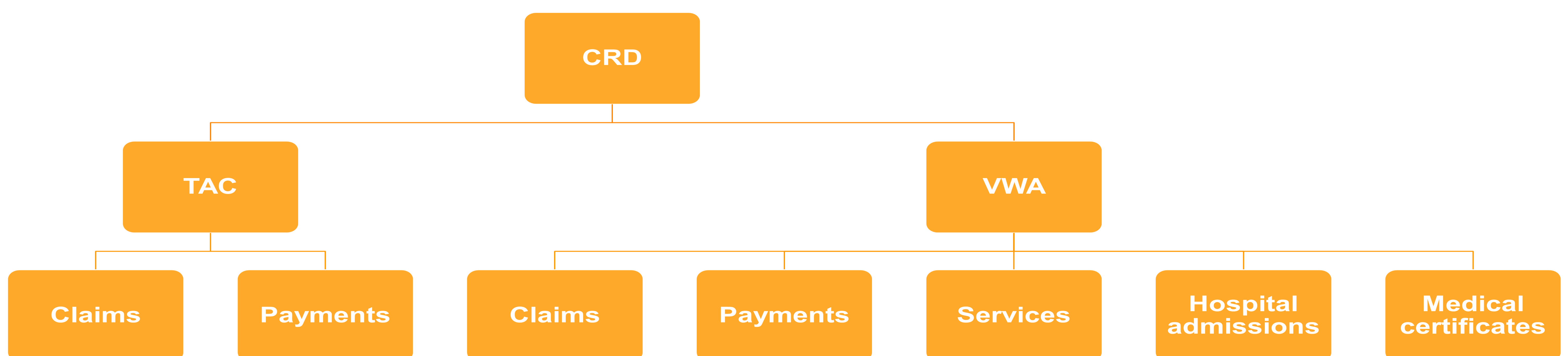
Samantha Barker¹ & Khic-Houy Prang¹

¹Institute for Safety, Compensation and Recovery Research, Monash University, Melbourne, Australia

Background

The Compensation Research Database (CRD) is a unique Australian administrative database that supports research into compensation health. The CRD includes data for transport-related claims and work-related claims covered by the Transport Accident Commission (TAC) and Victorian WorkCover Authority (VWA). It holds over 20 years of population-based data of every compensable transport and workplace injury in the state of Victoria, Australia. The CRD is managed by the Institute for Safety, Compensation and Recovery Research (ISCRR) and overseen by a steering committee with representatives from TAC, VWA, Monash University and ISCRR.

0.6 million transport-related claims, 35 million payments & 77 variables
1.9 million work-related claims, 69 million payments & 154 variables



Current Activities



Data provision

De-identified data is made available to academics for use in their research (under strict guidelines).



Data analyses

ISCRR has conducted a range of data analyses in specific areas using epidemiological methods. For example:

- Repeat claims
- Patterns of healthcare service use following traumatic brain injury



Data linkage studies

Linkage to other datasets greatly enhances value of data. The CRD has been linked with:

- Victorian Orthopaedic Trauma Outcomes Registry
- Medicare Benefit Schemes

Further linkages are being explored.



Comparative effectiveness studies

Comparing VWA data to other workers' compensation jurisdictions nationally and internationally to understand the impact of policy on system outcomes.

Conclusion

The CRD provides a unique platform that leverages existing data to support research into compensation health. We continue our focus on growing data use and linkages, as well as ensuring alignment of CRD research to ISCRR, VWA and TAC's strategic direction.



ISCRR
Institute for Safety, Compensation and Recovery Research

A joint initiative of



Victorian WorkCover Authority



TRANSPORT ACCIDENT COMMISSION



MONASH University